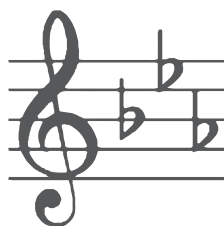


## HOW TO FIND THE KEY - FLATS

To find the key (tonality) from the key signature

PENULTIMATE FLAT → KEY  
The one before the last

### FOR EXAMPLE



The penultimate flat in the key signature is Eb.

The piece would be in Eb Major

### REMEMBER

No flats no sharps = C major  
1 flat = F major

Ready to learn more?  
Watch this **video**!

