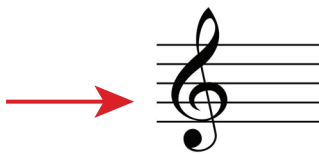


THE MUSICAL CLEFS

TREBLE CLEF



G CLEF

The treble clef starts on the **second line** (counting from the bottom). Therefore, it tells us where the note G is on the staff.

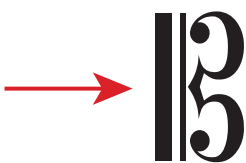
BASS CLEF



F CLEF

The bass clef starts on the **forth line** and also includes two dots around it. Therefore, it tells us where the note F is on the staff.

SOPRANO, MEZZO-SOPRANO, ALTO, TENOR, BARITONE CLEFS



C CLEFS

The 5 clefs share the same symbol, which can be written on the 5 lines of the staff. The symbol always indicates the position of **middle C**, which is where the two bubbles of the B meet.

Tip: Learn the C clefs in order and remember that their names is the same as the human voices in a choir.

Ready to learn more?
Watch this **video**!

