

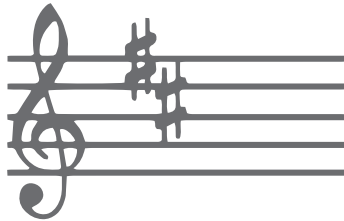
## HOW TO FIND THE KEY - SHARPS

---

To find the key (tonality) from the key signature

LAST SHARP → + 1 SEMITONE → KEY

### FOR EXAMPLE



The last sharp in the key signature is C#.

A semitone up from C# is D

The piece would be in D Major

---

Ready to learn more?  
Watch this **video!**

